

Wegmans

eat well live well™

Passport
to family wellness



GENESEE
LAND TRUST
preserve. protect.

This Passport Belongs to:

Name _____

Address _____

Phone _____

Email _____

Field Notes:

***Welcome to the Genesee Land Trust's
Wegmans Passport to Family Wellness***

Genesee Land Trust is pleased to share with you, your friends, and family our wide-ranging system of trails. Each trail offers its own rewards, from woodlands to meadows, and marshes teeming with wildlife. With this passport you can discover areas of this region you never knew about, while enjoying the health benefits of exercising in the great outdoors. Join the millions who have discovered that walking is good for the body and soul.

Join Genesee Land Trust and Wegmans in exploring the wonders of nature with your family and friends right in our own backyard. Here is your passport to having fun, winning prizes, and getting healthy all at the same time!

Happy trails,

Gay Mills, *Executive Director,*
Genesee Land Trust

Marcie Bartolotta, MS
Wegmans Food Markets
*Manager, Eat Well, Live Well
Community Initiatives*



Please look for a trail marker like the one illustrated below on each trail. Trail markers are mounted on 4x4 posts.

When you locate a trail marker, use a pencil or crayon to rub the name of the trail on the corresponding page of your passport.

Wegmans Passport *to family wellness*

Discovering the trails of the



GENESEE
LAND TRUST
preserve. protect.

To record your visit to this trail, find the page for this trail in your Wegmans Passport to Family Wellness and make a rubbing of the box at the right using a pencil or crayon.

**Ganargua Creek
Meadow Preserve**

Rules:

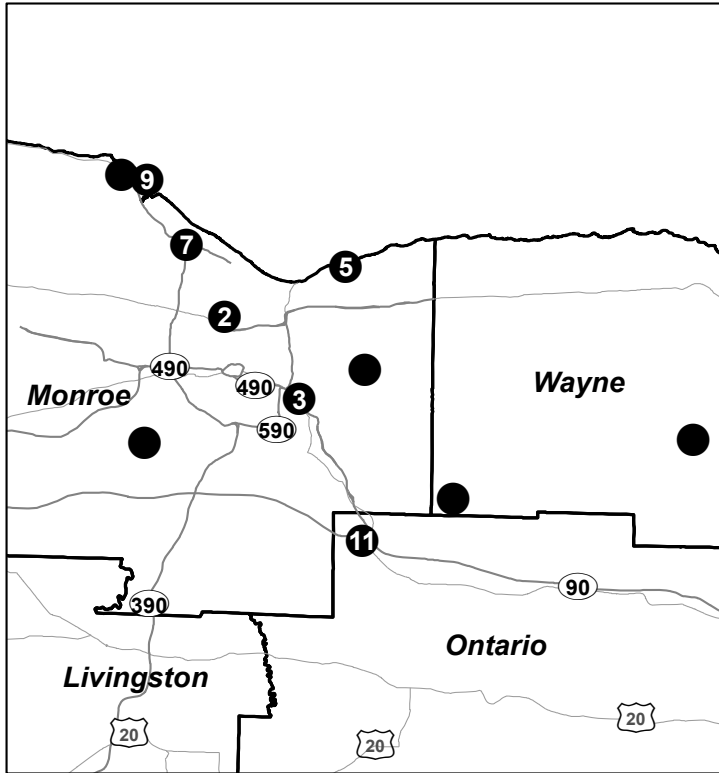
All Genesee Land Trust properties are managed strictly for nature preservation. Welcomed activities include nature study, photography, and walking. To avoid damaging wildflowers, please stay on the trails.

- No hunting or trapping
- No horses, motorized vehicles, or bicycles
- All dogs must be leashed and cleaned up after
- No removal of any vegetation or dead wood
- No camping or fires
- No trail cutting or marking of trees
- Please respect neighboring properties

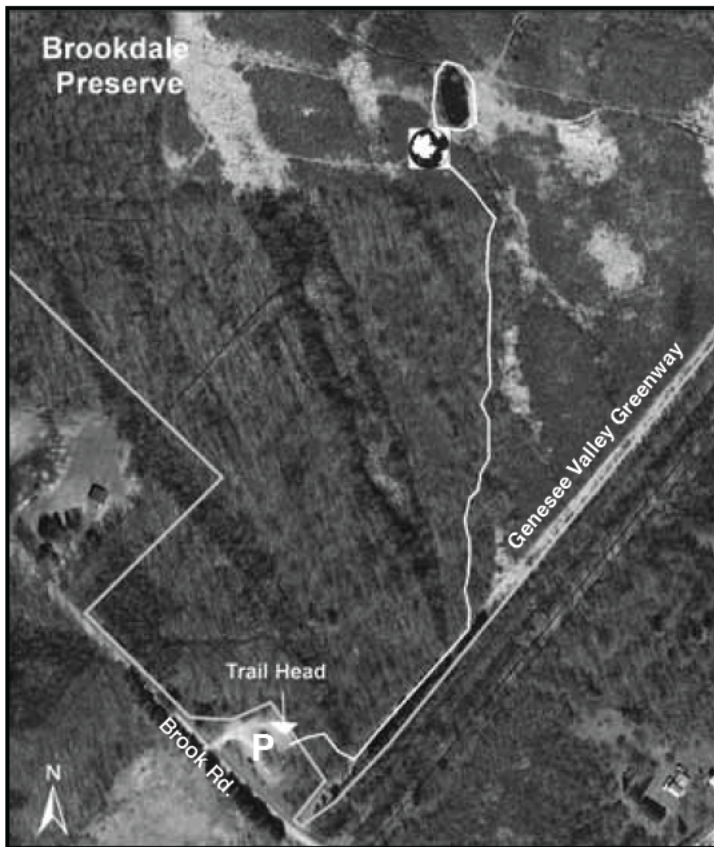
When you collect at least 9 different marker rubbings, bring your passport to the Genesee Land Trust office (46 Prince St., Suite LL005, Rochester, 14607) and receive a coupon redeemable for a Wegmans product and a Genesee Land Trust water bottle. You will also be eligible to win a plant at Genesee Land Trust's Native Plant Sale.

If you complete 14 of the trail marker rubbings in this book, in addition to receiving the rewards listed above, you will also receive two complimentary tickets to Genesee Land Trust's Backyard Habitat Tour, and you will be eligible to win a one-year Genesee Land Trust family membership.

Genesee Land Trust Hiking Trails



1. Brookdale Preserve
2. El Camino Trail
(with City of Rochester)
3. Corbett's Glen Nature Park
(with Town of Brighton)
4. Ganargua Creek Meadow Preserve
5. Gosnell Big Woods Preserve
(with Town of Webster)
6. Hipp Brook Preserve
7. Island Cottage Woods Preserve
8. Kaiser-Manitou Beach Banding Station
9. Manitou Beach Preserve
10. Kraai Preserve
11. Lehigh Crossing Park
(with Town of Victor)



P Parking



Trail Marker

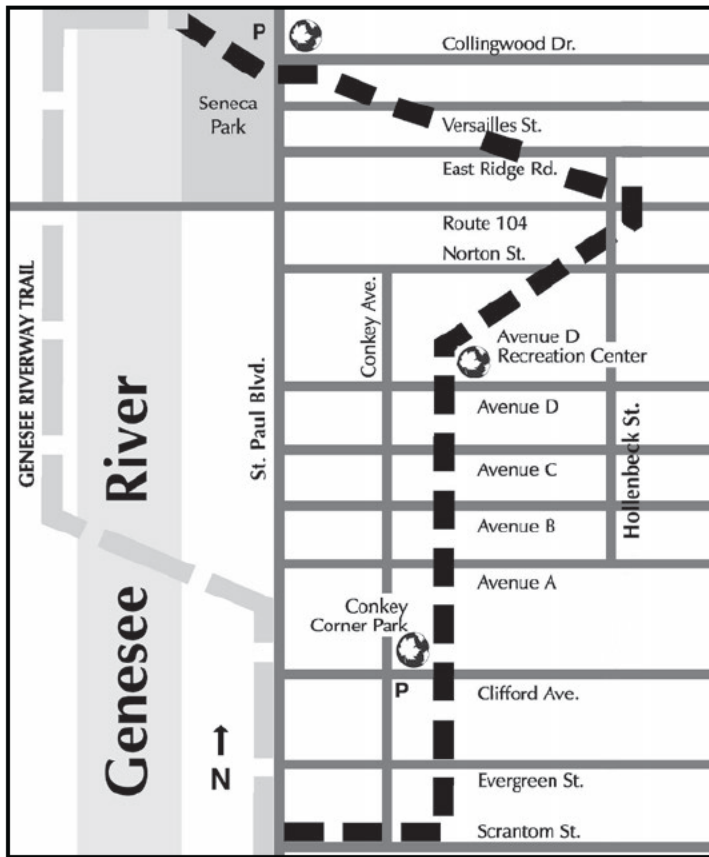
1. *Genesee Land Trust's Brookdale Preserve Chili*

Location: The preserve lies between Ballantyne and Brook Roads in the town of Chili. Entrance is at the parking lot on Brook Road, about 1,000 feet west of Scottsville Road.

Trail Description: This trail leads ½ mile (each way) through a wooded wetland, mown grass utility right-of-way, woodland, and meadow, ending at a pond. The trail surface contains sections of mulch, boardwalk, mud, and mown grass.

Property Features: This 275-acre Genesee Land Trust property borders the Genesee Valley Greenway on the east. It contains wooded wetlands, open meadows, and hardwood uplands. It is home to numerous species of birds and an exceptional variety of frogs.

MAKE TRAIL MARKER RUBBING HERE



P On-Street Parking



Trail Marker

2.

City of Rochester's El Camino Trail

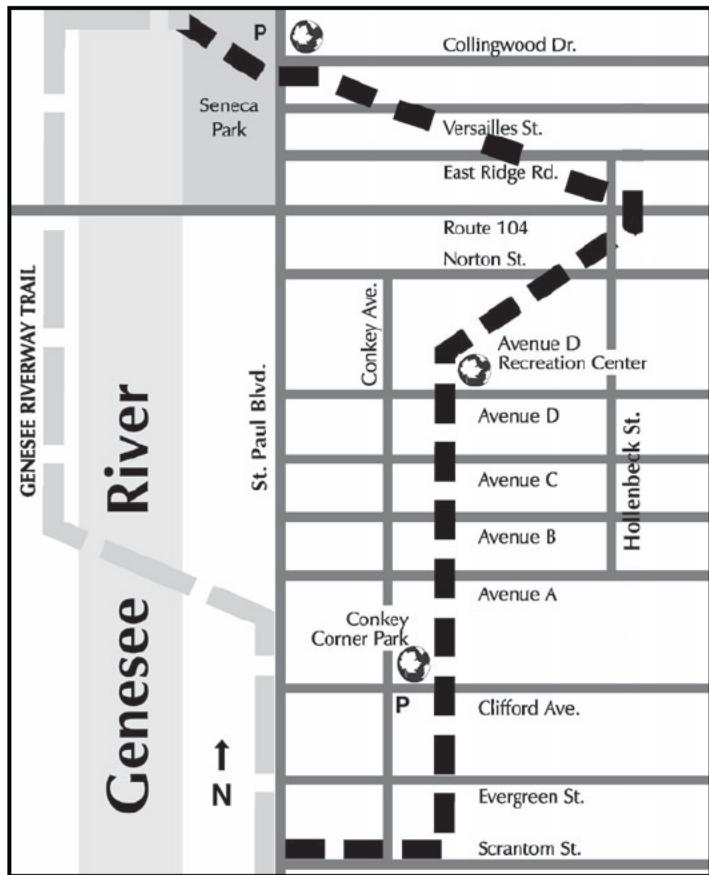
*Created in partnership with
Genesee Land Trust*

Location: Park at Seneca Park or on the street near Conkey and Clifford Avenues.

Trail Description: This 2.25-mile (each way) linear stone dust and pavement walking and bicycling trail runs along the Rochester Running Track's abandoned railway bed that stretches through various city residential and industrial neighborhoods and Seneca Park. The trail marker at Conkey Corner Park is on a landscaping timber northeast of the playground.

Property Features: El Camino Trail provides an off-road connection for the neighborhoods to the Genesee River, Seneca Park and the Riverway Trail.

MAKE COLLINGWOOD DRIVE
TRAIL MARKER RUBBING HERE



P On-Street Parking



Trail Marker

2.

El Camino Trail, continued

MAKE AVENUE D RECREATION CENTER
TRAIL MARKER RUBBING HERE

MAKE CONKEY CORNER PARK
TRAIL MARKER RUBBING HERE

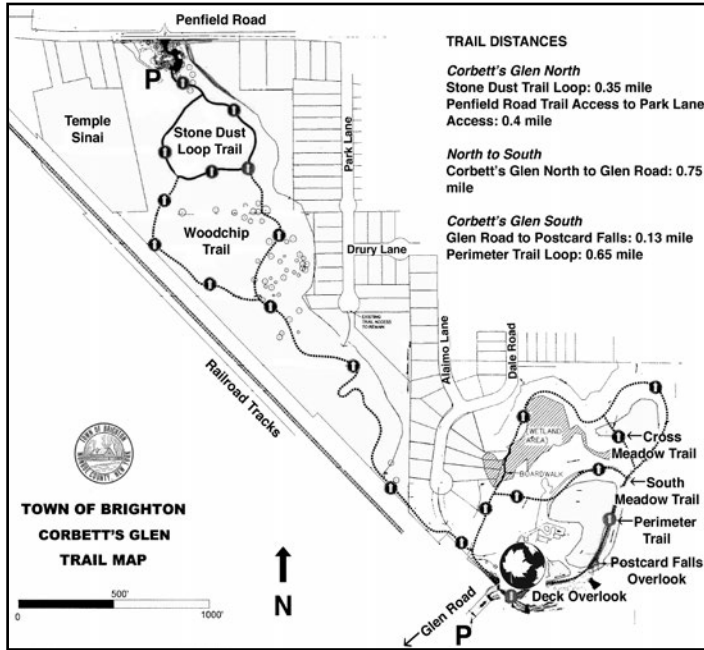
3.

Town of Brighton's Corbett's Glen Nature Park Protected in partnership with Genesee Land Trust

Location: To access Corbett's Glen North, park in the lot off of Penfield Rd., across from Forest Hills Rd. To access Corbett's Glen South, park on the side of Glen Rd., which branches off Linden Ave. near Route 441, and follow signs through the railroad tunnel to the park entrance.

Trail Description: The nature park has approximately 2.8 miles of trails, with a level loop at the southern end along Allens Creek featuring the well-known Postcard Falls and the historic tunnel under the railroad embankment. A steep, hilly path, connects the northern and southern trails. The north end features wooded areas. The trail marker is on the kiosk by the Deck Overlook.

Property Features: This 52-acre park offers breathtaking scenery and a variety of birds and mammals. Allens Creek is a habitat for salmon, trout, turtles, and many other animals.



P Parking



Trail Marker

MAKE TRAIL MARKER RUBBING HERE



P Parking



Trail Marker

4. *Genesee Land Trust's Ganargua Creek Meadow Preserve Macedon*

Location: South of Route 31, off Wilkinson Rd. in Macedon. Two small parking areas for the West Side Trail are located at 1) the end of Bunker Hill Dr. off of Wilkinson Road, and 2) on Wilkinson Rd. at Victor Rd. near Ganargua Creek. Roadside parking for the East Side Trail is available on Victor Rd., north of Bowerman Rd., near the Ganargua Creek Preserve sign.

Trail Description: Both trails offer easy, level walking through meadows following a steep hill descent. From the West Side trailhead off Bunker Hill Dr., follow a forested trail down a hill, to a circular trail around the meadow on the west side of Ganargua Creek (1 mile, total).

For a level hike, begin at the Wilkinson Road parking area. A 0.3-mile spur takes you through Wayne ARC property, adjacent to Genesee Land Trust's preserve. This trail connects to the West Side Trail loop.

The East Side Trail takes you on a 0.8-mile walk with two loops that wind their way around two meadows along the east side of the creek.

(continued on next page)

4.

Ganargua Creek Meadow Preserve, continued

Property Features: The preserve is on 56 acres and consists of a large open meadow that provides exceptional bird and butterfly habitat, an area of hardwoods with wildflowers and shrubs, and the Ganargua Creek.

Ganargua Creek Meadow Preserve was donated to Genesee Land Trust in memory of Timothy Johnson.



P Parking



Trail Marker

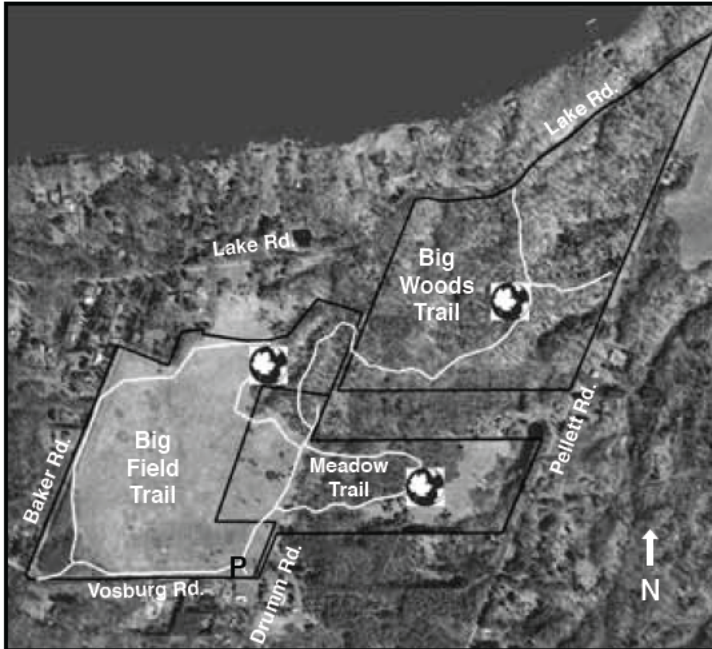
MAKE WEST SIDE TRAIL MARKER
RUBBING HERE

MAKE EAST SIDE TRAIL MARKER
RUBBING HERE

5.

Town of Webster's Gosnell Big Woods Preserve

*The Big Woods are protected by a conservation
easement with Genesee Land Trust*



P Parking



Trail Marker

Location: Between Lake, Baker, and Vosburg Roads in Webster. A parking lot is located at the corner of Vosburg and Drumm Roads.

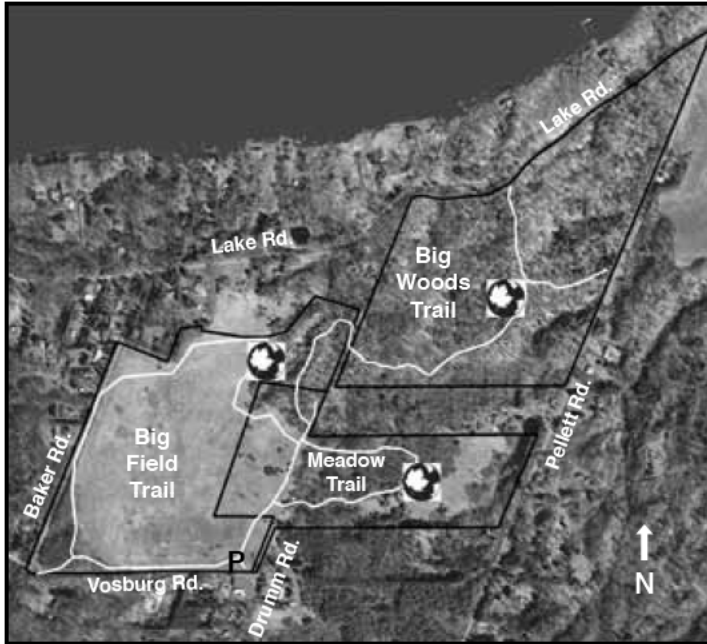
Trail Description: The Big Field Trail travels 1.2 miles around the perimeter of the field. Two-tenths of a mile north of the parking lot is the Big Woods Trail, a 0.7-mile (round trip out and back) hike through old-growth forest. A third trail, the Meadow Trail, heads east for a ½-mile (round trip) loop through woods and lush meadow. Hiking connections to Whiting Road Nature Preserve and the Hojack Trail can be seen at the Friends of Webster Trails website: <http://www.webstertrails.org/>

Property Features: The trails offer beautiful views of grassland fields, wildflowers, and a spectacular old-growth forest. You might see turkeys, deer, and a variety of birds. No bicycles are allowed in the Big Woods.

(continued on next page)

5.

Gosnell Big Woods Preserve, continued



P Parking

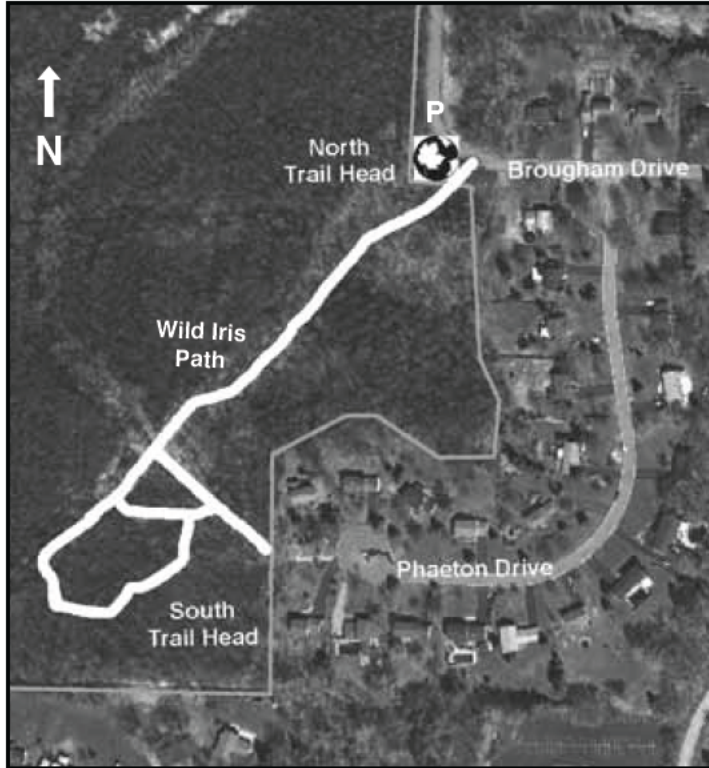


Trail Marker

MAKE BIG WOODS TRAIL MARKER
RUBBING HERE

MAKE BIG FIELD TRAIL MARKER RUBBING HERE

MAKE MEADOW TRAIL MARKER RUBBING HERE



P On-Street Parking



Trail Marker

6.

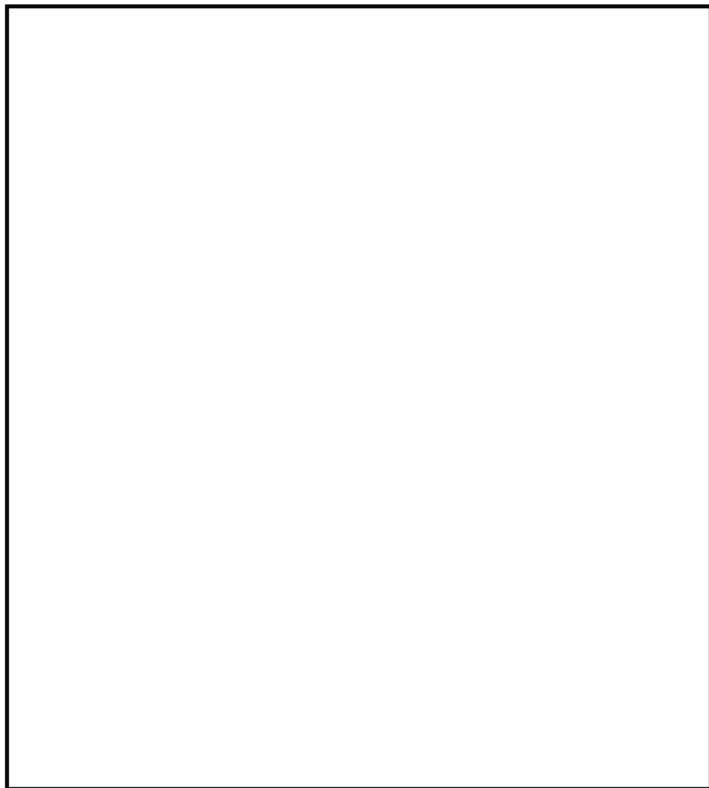
*Genesee Land Trust's
Hipp Brook Preserve
Penfield*

Location: West of Jackson Rd., off Brougham Dr. in Penfield. The North Trail Head is located at the intersection of Brougham Dr. and Coachman Dr. The South Trail Head is located at the end of Phaeton Dr. Both trail heads lead to the Wild Iris Path. Park at the side of the road.

Trail Description: The Wild Iris Path is approximately ½-mile long, with boardwalks and mulched ground.

Property Features: The 94-acre property is mostly wetland, with habitat types including deciduous swamp, cattail marsh, a small open pond, and very limited dry ground. These areas provide habitats for a variety of trees, shrubs, wildflowers, birds, and butterflies. In springtime the wet woods are full of marsh marigolds, and wild iris can be seen in June.

MAKE TRAIL MARKER RUBBING HERE



P On-Street Parking



Trail Marker

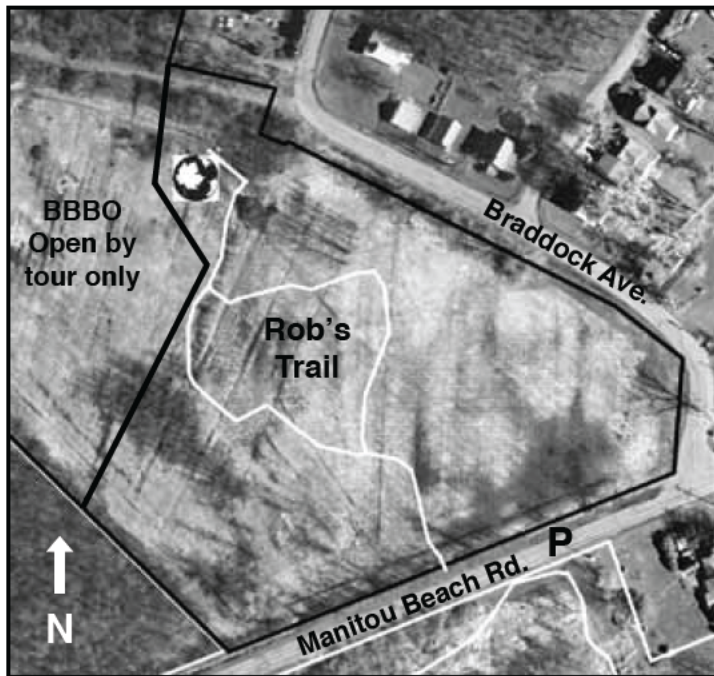
7.
*Genesee Land Trust's
Island Cottage Woods Preserve
Greece*

Location: On Old Island Cottage Rd., north of the intersection of the Lake Ontario St. Parkway and I-390. Old Island Cottage Rd. branches off Island Cottage Rd. before the Lake Plains Waterfowl Building. Park along Old Island Cottage Rd.

Trail Description: The preserve is accessible from the south at a trail head located at the dead end of Old Island Cottage Rd. There are several boardwalks and benches throughout the entire trail system. The ½-mile trail loops through woods and has a few views over the cattail wetlands.

Property Features: The 61-acre preserve property is a well-known birding site, ideal for viewing migratory birds.

MAKE TRAIL MARKER RUBBING HERE



P On-Street Parking



Trail Marker

MAKE TRAIL MARKER RUBBING HERE

8.

Genesee Land Trust's Kaiser-Manitou Beach Banding Station

Greece

Managed with the Braddock Bay Bird Observatory

Location: At the northeast end of Manitou Beach Road (Route 261) in Greece. The Kaiser-Manitou Beach Banding Station property is on the north side of the road. Park along the south side of Manitou Beach Rd., across the street from the trail's access.

Trail Description: Rob's Trail is a mown 0.2-mile trail that winds through a field with views of the surrounding trees and migrating birds that they host. The passport trail marker is mounted on the kiosk.

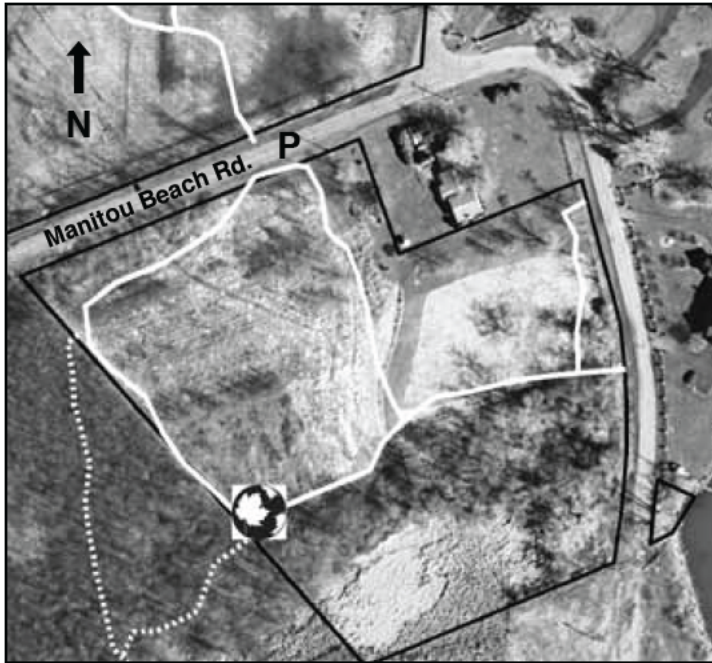
Rob's Trail is open to the public throughout the year. However, during spring and fall migrations when research is being conducted, if you wish to visit north of the kiosk, please stop by the Braddock Bay Bird Observatory (BBBO) for a guided tour. Access BBBO via the driveway entrance.

Property Features: Genesee Land Trust has permanently protected the 10 acres where BBBO has banded and studied migratory songbirds for more than 20 years. This property is part of a major bird migration stopover area.

Note: The Manitou Beach Preserve is across the street on the south side of the road.

9.

Genesee Land Trust's Manitou Beach Preserve Greece



P On-Street Parking



Trail Marker

Location: At the northeast end of Manitou Beach Road (Rte. 261), in Greece. The Manitou Beach Preserve is on the south side of Manitou Beach Road, where parking is available.

Trail Description: The preserve has a mown 0.3-mile meadow trail.

Property Features: The approximately 5.25-acre preserve is part of the larger Department of Environmental Conservation-designated Braddock Bay Fish & Wildlife Management Area. These areas are extremely important for migratory bird habitat. In the spring, colorful warblers and other songbirds can be found throughout this small preserve.

Note: The Kaiser-Manitou Beach Banding Station is on the north side of the road.

MAKE TRAIL MARKER RUBBING HERE

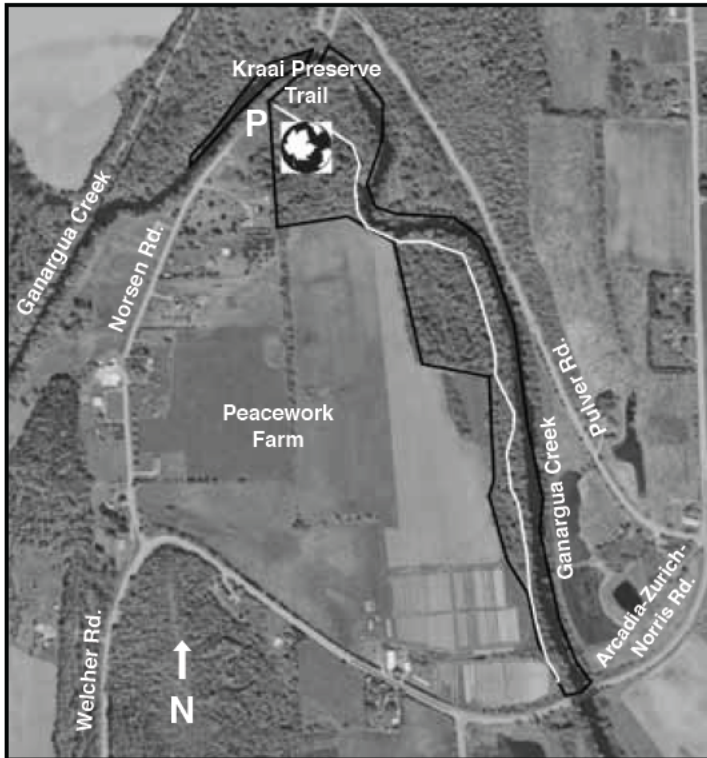
10.

Genesee Land Trust's Kraai Preserve Newark

Location: From Route 31 in Newark, take Route 88 north, turn east on Mud Mills Rd., then north on Welcher Rd. Parking is located at the end of Norsen Rd. off Welcher Rd.

Trail Description: From Norsen Road, the 0.6-mile (each way) trail leads through a wooded wetland, across a small stream, and into a woods filled with trillium in the spring. A highlight is the trail's hand-painted ceramic native plant markers. The remainder of the trail winds through the woods following Ganargua Creek.

Property Features: The Kraai Preserve is mature woodland with abundant native wildflowers and a natural creek corridor. It is adjacent to a 114-acre working organic farm owned by the Genesee Land Trust and managed by Peacework Farm as a CSA for the Genesee Valley Organic Community Supported Agriculture. The farm is open by appointment only. To learn more, go to www.gvocsa.org.

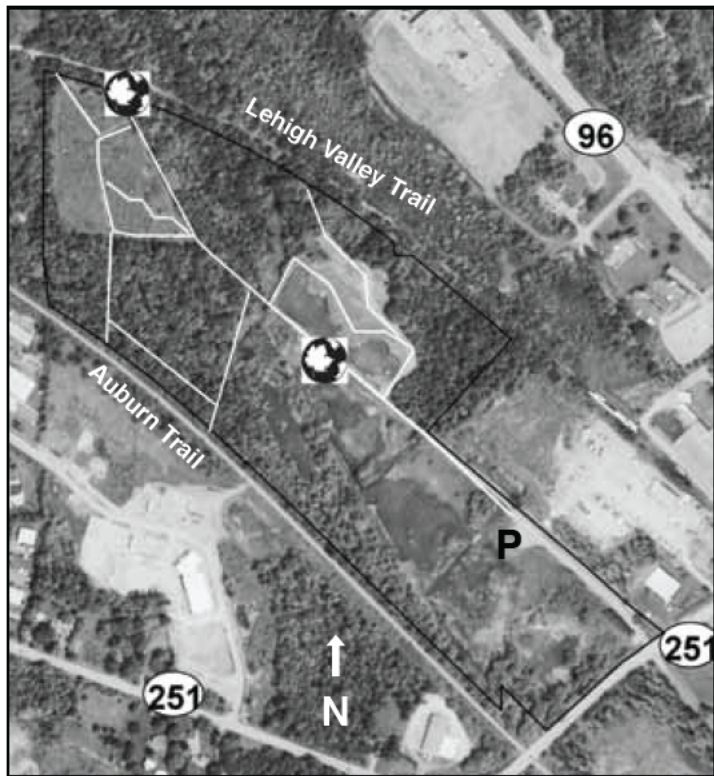


P Parking



Trail Marker

MAKE TRAIL MARKER RUBBING HERE



P Parking



Trail Marker

11.

Town of Victor's Lehigh Crossing Park

Protected in partnership with

Genesee Land Trust

Location: On the northwest side of Victor-Mendon Rd. (Route 251), just south of the intersection with Route 96 in Victor. Parking is located off of Victor-Mendon Rd., across from the Auburn Creek Driving Range.

Trail Description: The park features about 1 mile of easy, flat, crushed stone and grass trails. From the parking lot, follow the 10-foot-wide stone dust trail 0.2 mile to a pond. Taking the trail northeast leads you up a small hill, through a meadow, and through the woods to the Lehigh Valley Trail. Following the trail northwest takes you to a mown grass trail, through the woods, and into an open field with mown paths that link to the Lehigh Valley Trail and the Auburn Trail. One trail marker is mounted on the gazebo structure, and the other is on a 4" x 4" post.

Property Features: Once a crossing point for three rail lines, the park lies between the Auburn and the Lehigh Valley multi-use trails. This 57-acre park is made up of woodlands, wetlands, and open fields, which are home to a variety of birds, waterfowl, and mammals.

(continued on next page)

11.

Lehigh Crossing Park, continued



P Parking



Trail Marker

MAKE GAZEBO TRAIL MARKER RUBBING HERE

FIELD TRAIL MARKER RUBBING HERE

What is the Genesee Land Trust?

Genesee Land Trust is the local, not-for-profit land trust in the Greater Rochester region, working to protect open space for public benefit.

Founded in 1989, Genesee Land Trust preserves and protects land within Monroe and Wayne Counties, and portions of Ontario, Genesee, Livingston, and Orleans Counties. It protects woods, waterways, wetlands, farmland, open space, fish and wildlife habitat, and scenic or recreational areas by acquiring property or development rights and by assisting towns, individuals, and private groups with their own land protection efforts.

If you are concerned about the steady erosion of our wildlife habitat, scenic vistas, and farmland, join us now!

By becoming a member of the Genesee Land Trust, you will receive our quarterly newsletter and invitations to guided field trips, lectures by naturalists, and special events. Most importantly, you will be contributing to the protection of land in our region. We also have numerous volunteer activities tailored to your interests and commitment level.

For more information about Genesee Land Trust, call 585-256-2130 or e-mail info@geneseeandtrust.org.

www.geneseeandtrust.org

Join the Genesee Land Trust!

Genesee Land Trust is supported by membership dues, grants, and contributions. Your gift is tax deductible to the full extent of the law.

Name _____

Address _____

City _____ State _____ ZIP _____

Phone _____

Email _____

Please send me e-mail updates.

Please send me information about volunteer opportunities.

Enclosed is a check made out to "Genesee Land Trust."

\$1,000

\$500–\$999

\$250–\$499

\$100–\$249

\$50–\$99

\$35–\$49

Please charge my Visa/Mastercard (circle one) \$ _____

Card # _____ Exp. Date _____

Signature _____

**Mail to: Genesee Land Trust, 46 Prince St., Suite LL005,
Rochester, NY 14607**

www.geneseeandtrust.org



GENESEE
LAND TRUST
preserve. protect.

Genesee Land Trust is fortunate to preserve a wide variety of natural resources that contain unique picturesque trails. Always be safe, and please leave the trails the same way you found them.

Thank you for participating in this program and for supporting Genesee Land Trust! Your membership ensures that healthy programs like this continue to thrive. Join us today at www.geneseelandtrust.org.

46 Prince St., Suite LL005
Rochester, NY 14607
585-256-2130

www.geneseelandtrust.org